



Make Your Making Easier

Partner Seller Product Catalog

■ CONTENTS

■ About Elecrow	1
■ Elecrow Partner Seller	1
■ DIY Electronics	2
■ Kits	22
■ IoT & Smart Home	25
■ Our Service	28

About Elecrow

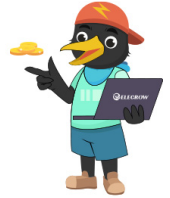
Elecrow is a company specializing in the R&D, design (prototyping), and manufacturing of electronics. Founded in 2014, the company has grown to become a leading supplier of open-source hardware and electronic components, offering a wide range of products and services to customers around the world.

Elecrow Partner Seller

Elecrow partner seller program is enabling you to Manufacture and Sell your products at Elecrow. Anyone who can make DIY electronics and projects, whether college students, individual makers, DIY electronics hobbyists, hackers, tech geeks, business groups, startups, or even tech novices, as long as you have the enthusiasm to create tech projects, is welcome to join as a partner seller! Elecrow offers a turn-key business platform with free storage/promotion, order fulfilling, and drop ship services.



Be An Elecrow Partner Seller Sell On Elecrow, Start Your Business!



What Elecrow Provides



Manufacturing

Elecrow helps you with PCB manufacturing/Assembly & other production services.



Free Warehousing

Free warehousing and stock management for your products.



Global Logistics

International logistics services.



Order Processing

Elecrow fulfills your sales orders and send the parcels to your end customer.



Easy to use

Fewer steps to sell on Elecrow.



More Benefits

Elecrow only charges 5% of the sale (excluding shipping).

Product Category



DIY Electronics

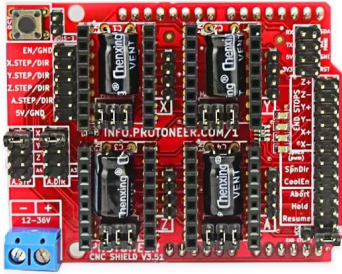


Kits

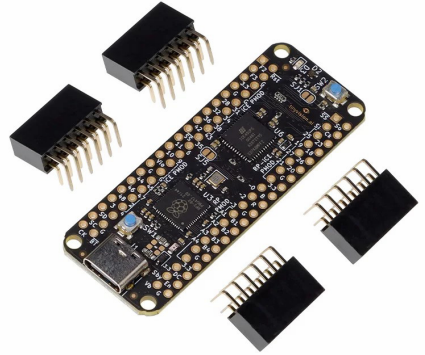


IoT & Smart Home

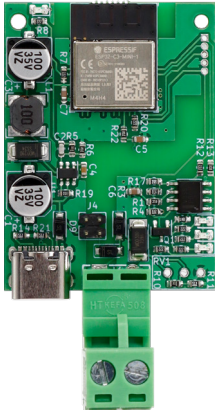
DIY Electronics



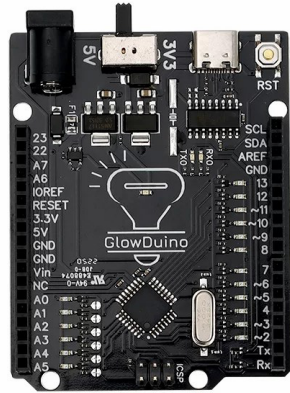
Arduino CNC Shield V3.51 –
GRBL v0.9 compatible – Uses Pololu Dr



Pico-ice RP2040 plus Lattice
iCE40UP5K FPGA



EBUS to WiFi adapter module v6.1



GlowDuino Uno A better Arduino



Analog MEMS Microphone with
Variable Amp

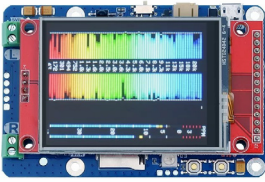


Digital MEMS Microphone

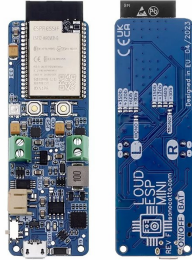


Esp32-Stick-PoE-A

DIY Electronics



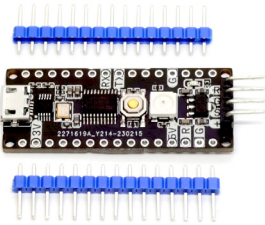
Loud ESP



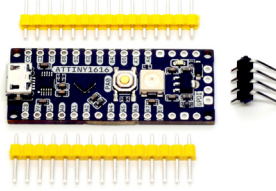
Loud ESP Mini



ATtiny Candle



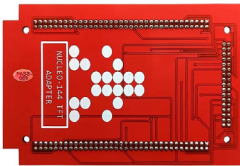
STM8S003 Development Board



ATtiny1616 Development Board



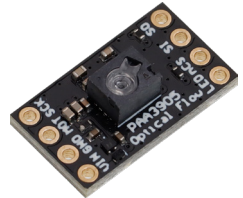
Mouse Whisperer



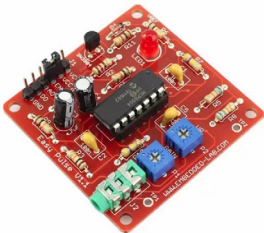
4.0 TFT shield for STM32 nucleo 144



AS7331 UVA/B/C Light Sensor Breakout



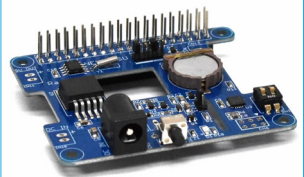
PAA3905 Optical Flow Camera



Easy Pulse Sensor:
A DIY Plethysmography
Fingertip Pulse Sensor

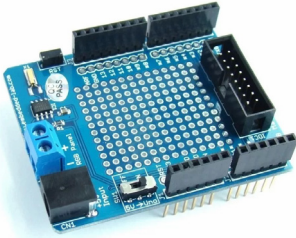


MonochromeVGA



Raspberry Pi Power Controller
(Ras p-On Type A with AC
Adapter)

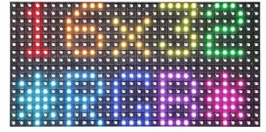
DIY Electronics



16x32 RGB LED Panel Driver Shield



16x32 RGB LED matrix panel + Arduino driver shield



16x32 RGB LED panel light P6 full color matrix module 1/8 scan



8 Digit SPI Seven Segment LED Display – Yellow Green



8 Digit SPI Seven Segment LED Display–Blue



8 Digit SPI Seven Segment LED Display – Yellow



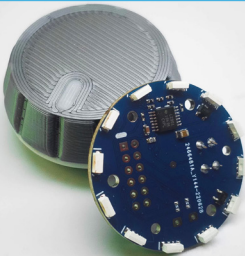
EasyESP-1: An ESP8266 experimenter board for beginners



Serial driver for large seven segment LED displays (PCB only)



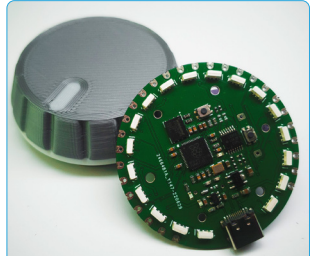
SPI7SEGDISP4.40-1R



High Resolution Magnetic Rotary Encoder (MINI)



High Resolution Magnetic Rotary Encoder

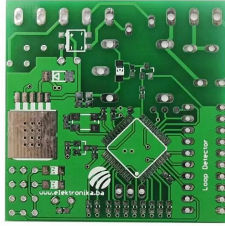


Pico Dev M3 board

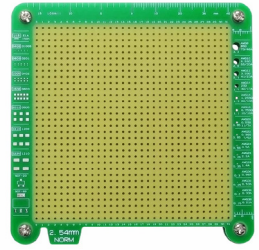
DIY Electronics



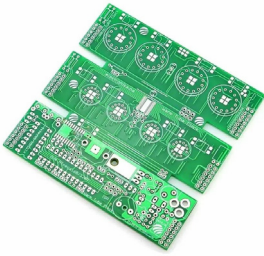
Eurorack Stripboard



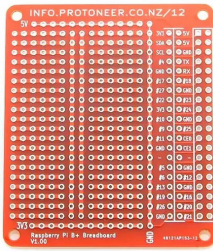
Blank PCB for Single Channel Inductive Loop Vehicle Detector



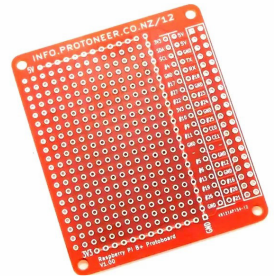
2.54mm Pin Header Soldering Jig



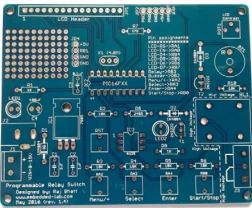
Warm Tube Clock v2 PCB Board



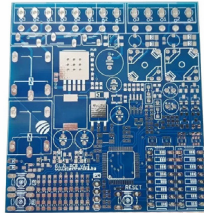
Raspberry Pi B+ Breadboard



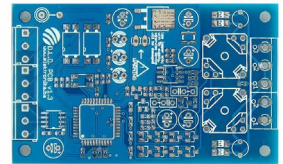
Raspberry Pi B+ Protoboard



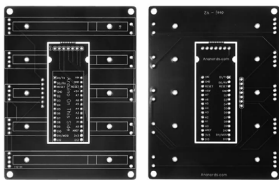
Programmable relay timer switch (PCB only)



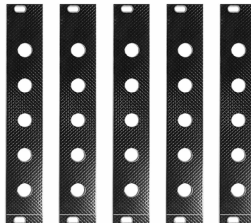
Blank PCB for Dual Channel Inductive Loop Vehicle Detector (A)



Blank PCB for Dual Channel Inductive Loop Vehicle Detector (B)



DEEJ Volume Mixer PCB Board V2



Eurorack prototyping 4HP 5-hole Front Panel

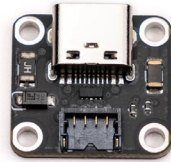


PIC for Dual Channel Inductive Loop Vehicle Detector

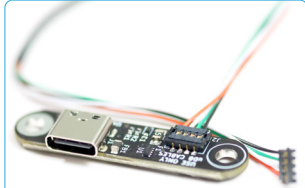
DIY Electronics



Breadboard adapter for ESP8266 Serial-to-WiFi transceiver



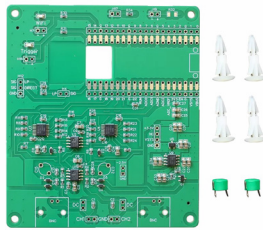
Unified C4 Daughterboard and Molex Pico-EZmate Cable



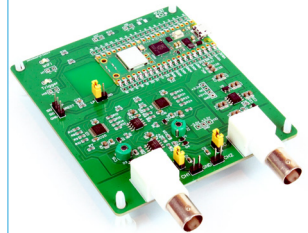
Unified S1 Daughterboard and Molex Pico-EZmate Cable



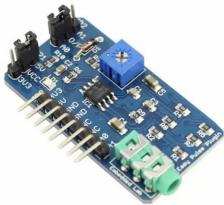
Easy Pulse mikro



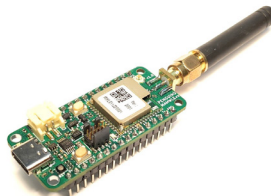
FSCOPE-500K DIY OSCILLOSCOPE



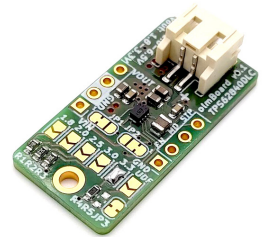
DSO-500K Oscilloscope



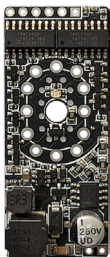
Easy Pulse Plugin: An Arduino Compatible high-performance Pulse



Penguino STM32WL MAMWLE-XX LoRa Dev-Board



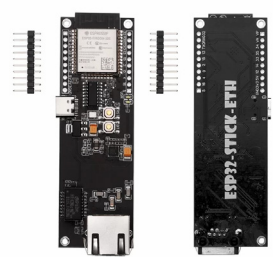
olmBoard - TPS62840 ULP Buck Converter 60nA Iq



EasyNixie Module

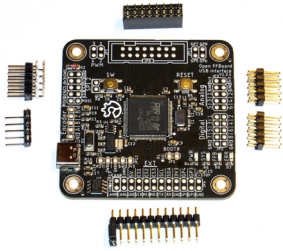


Esp32-Stick-PoE-P

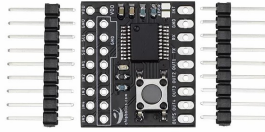


Esp32-Stick-Eth

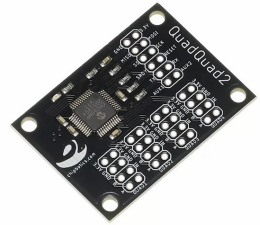
DIY Electronics



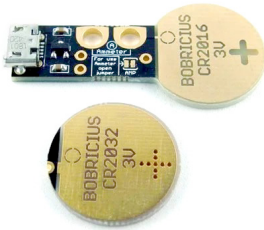
Open FFBoard
(STM32F407 USB Interface only)



Button gesture processor
with GPIO/I2C/UART



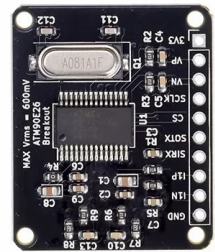
QuadQuad2 – 4ch Quadrature
Decoder



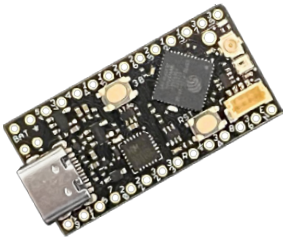
Coin cell battery emulator
CR2016/CR2032



Lattice iCE40UP5K FPGA
development board



ATM90E26 Breakout



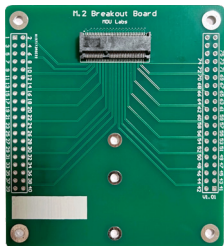
Nanoboy PICO-V3-02 JR



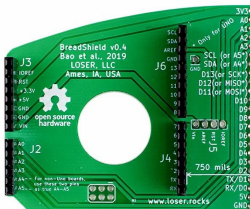
Nanoboy S3 JR



Small S3



M.2 (NGFF) Breakout Board

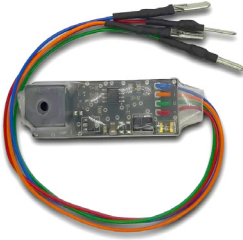


Breadshield for Arduino

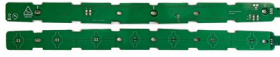


AMS1117 Adjustable Voltage
Regulator

DIY Electronics



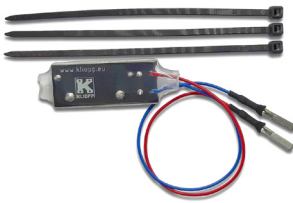
Remote tailgate closing module for Volvo XC70 V70 P3



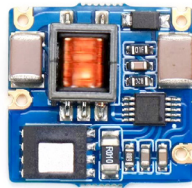
Third Brake LED Bar for BMW Z3 Roadster '96-'99



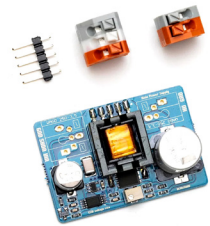
Volvo XC70 V70 side marker



Tail light extender for Volvo XC70 V70 p3



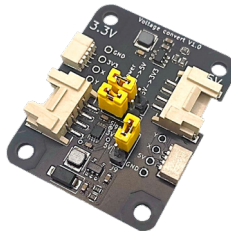
NCH8200HV Nixie DC-DC High Voltage Boost Power Converter.



NCH6300HV Nixie HV Power Module DC-DC booster.Nixie Power Supply



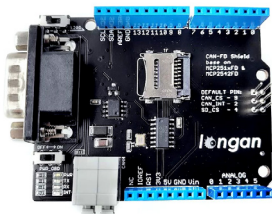
PQduino Board



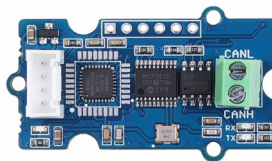
Voltage Convert Module for Grove/Qwiic



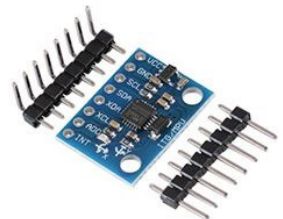
Encoder Counter



CAN FD Shield for Arduino

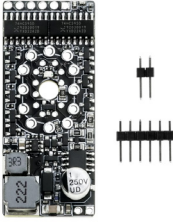


Serial CAN Bus Module

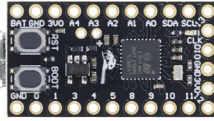


MPU-6050 Module 3 Axis Gyroscope Accelerometer Module

DIY Electronics



EasyNixie Module



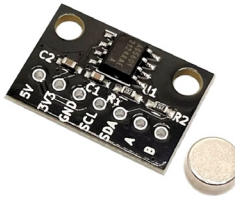
Ladybug STM32L432 Development Board



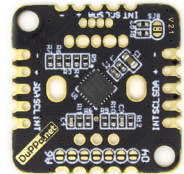
Lattice iCE40UP5K FPGA development board



USB 5V to $\pm 12V$ Power Supply Module



12bit(4096P/R) AS5601 Magnetic Rotary Encoder Module



I2CEncoder V2.1



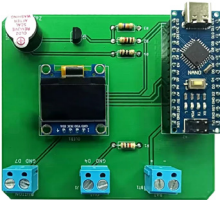
Smart Plant



Smart Dashboard



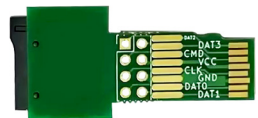
Smart Powermeter



Simple Arduino Huda Clark ZAPPER with Timer function



Pico QwiicReset Addon

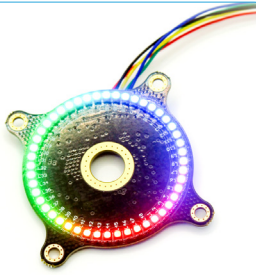


microSD breakout board

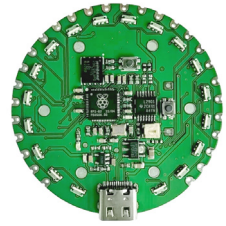
DIY Electronics



RGB LED Ring Small



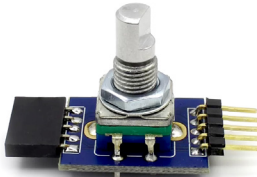
RGB LED Ring v1.1



Pico Dev M3



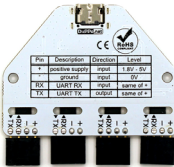
Transparent knob



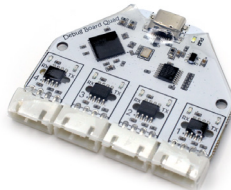
I2C Encoder Mini



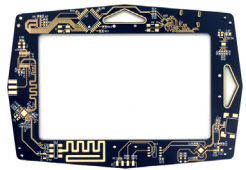
Illuminated RGB Rotary encoder



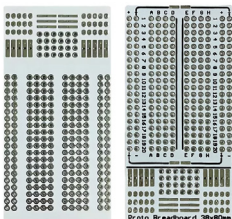
Isolated 4 port USB to TTL
UART FTDI PIN header



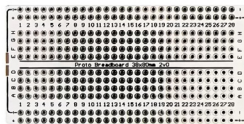
Isolated 4 port USB to TTL
UART FTDI JST connector



PCB Badge Holder



Proto Breadboard 38x80mm

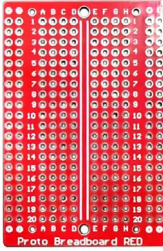


Proto Breadboard 38x80mm 2v0

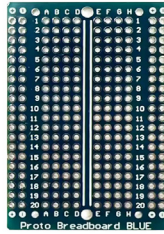


EdgeBox-RPi4

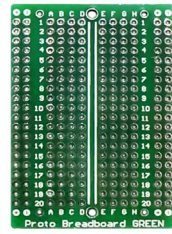
DIY Electronics



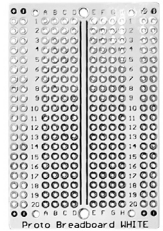
Proto Breadboard
60x40mm Red



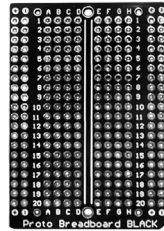
Proto Breadboard
60x40mm Blue



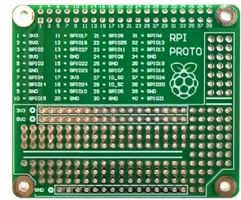
Proto Breadboard
60x40mm Green



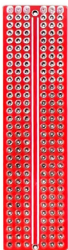
Proto Breadboard
60x40mm White



Proto Breadboard
60x40mm Black



RASPBERRY PI5 PROTO



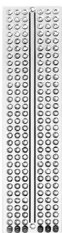
Universal Proto Board
20x80mm Red



Universal Proto Board
20x80mm Blue



Universal Proto Board
20x80mm Green



Universal Proto Board
20x80mm White

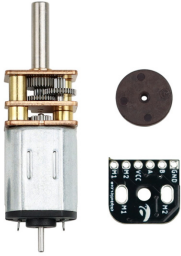


Universal Proto Board
20x80mm Black

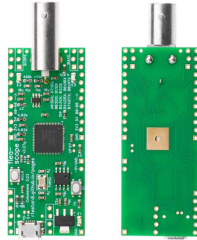


RPI PICO PROTO

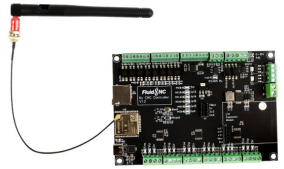
DIY Electronics



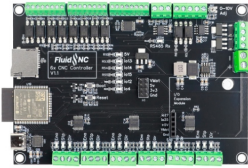
Geared Motor with Rotary Encoder



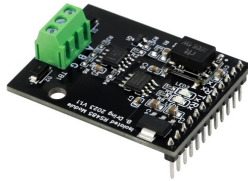
Flea-Scope™ USB O-scope



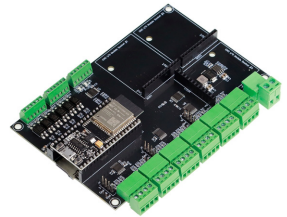
6x CNC Controller for FluidNC



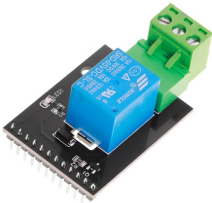
6x CNC Controller for FluidNC



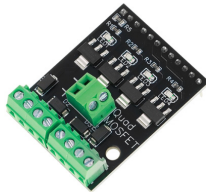
RS485 CNC I/O Module



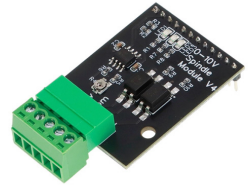
6 Pack CNC Controller for External Stepper Drivers



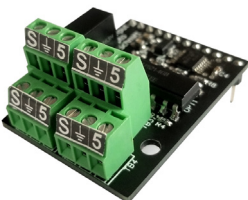
Relay CNC I/O Module



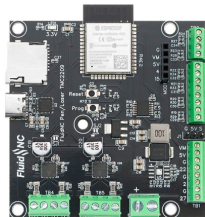
Quad MOSFET CNC I/O Module



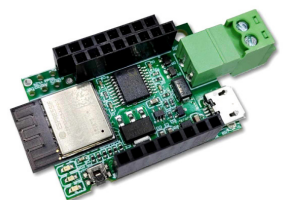
0-10V Spindle CNC I/O Module



4x Isolated CNC Input Module



TMC2209 Pen/Laser FluidNC CNC Controller

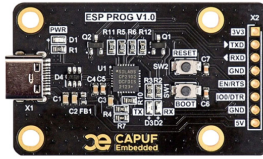


eBUS Adapter Shield v5

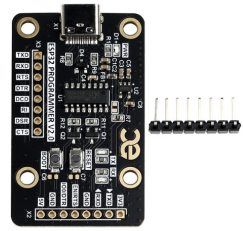
DIY Electronics



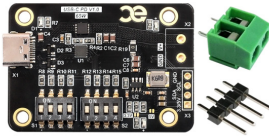
eBUS Adapter Shield C6



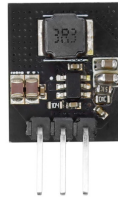
CAPUF ESP PROG V1



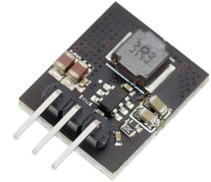
CAPUF ESP PROG V2



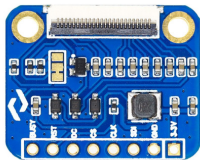
USB-C PD Power Delivery Board 65W



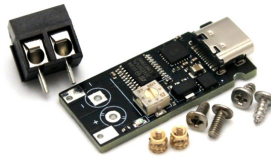
DC-DC LDOA 3.3V



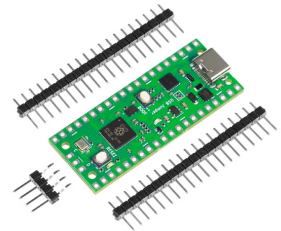
DC-DC LDOA 5V



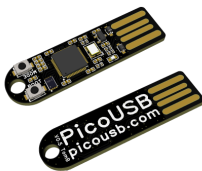
Universal 24-pin SPI e-Paper driver board



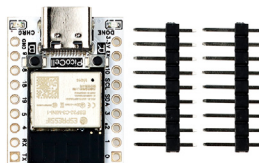
USB-C PD and PPS Trigger Board 5A



PicoPD - USB-C PD 3.0 PPS Trigger with RP2040



PicoUSB -Raspberry Pi Pico RP2040 powered Bad USB (Rubber Ducky)

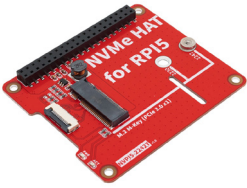


PicoCell-C3 V1.0

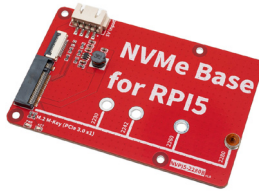


Neutron Pico Rev 1.1 - Assembled

DIY Electronics



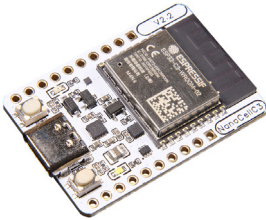
NVMe Raspberry Pi 5
NVPI5-2242T HAT 2230 / 2242
GEN 3 for Raspberry Pi



NVMe Raspberry Pi 5
NVPI5-2280B base for
Raspberry Pi 5 NVMe 223



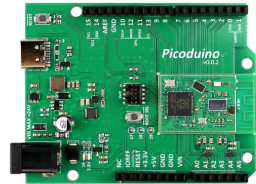
PicoBOB CNC Control Module
for GRBLHAL



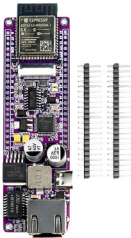
NanoCell-C3



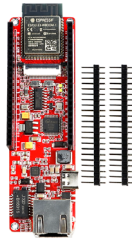
Raspberry Pi Pico W Module



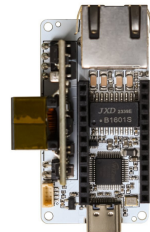
Picoduino



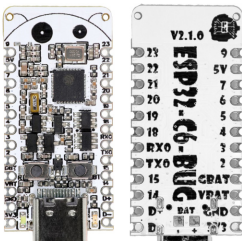
Esp32-Stick-PoE-P-Cam
(N16R8)



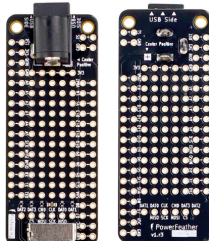
Esp32-Stick-PoE-A-Cam
(N16R8)



Esp32-Bug-Eth



Esp32-C6-Bug



PowerFeather ProtoWing



PowerFeather Solar Panel

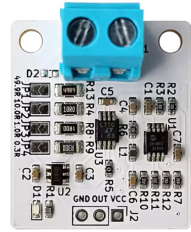
DIY Electronics



ESP32-S3 PowerFeather



Bed Distance Sensor



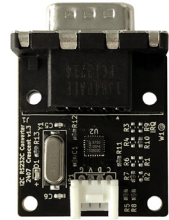
CT Sensor Amp



USB Serial I2C Converter



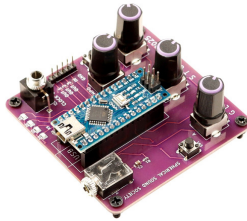
I2C-UART Converter



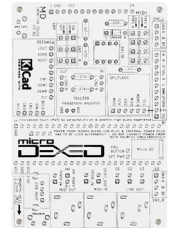
I2C-RS232C Converter



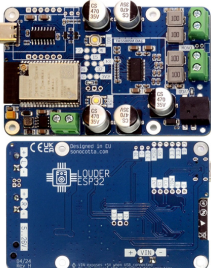
FTDI FT230XS USB UART
5V / 3.3V



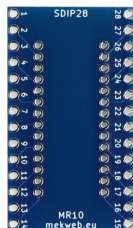
Glitch Storm 2025



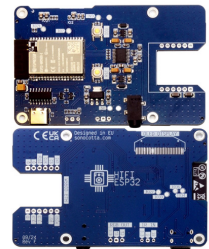
[MDT] Microdexed Touch PCB



Louder ESP32

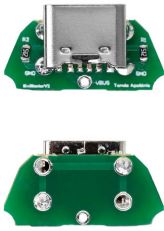


SDIP28 DIP28S 1.78 mm to 2.54
mm (0.1") Raster Adapter Board



HiFi ESP32

DIY Electronics



MX Master USB C conversion kit



Theremino TWinGo COBOT ARM Basic, complete Kit



Theremino TWinGo COBOT ARM Pro, complete Kit



Theremino Communication Adapter



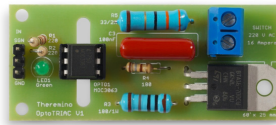
Theremino TWinGo Knob Controller



Theremino Low Voltage Power Supply



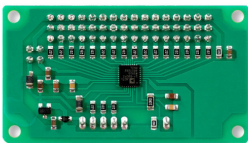
Theremino USB2.1 Cable Type A-B



Theremino OptoTRiAC



Theremino OptoRelay V3 "A" Photo Relay Coupled MOSFET"



Theremino ADC 24 Bit 16 Channels

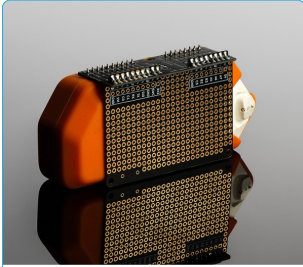


Theremino Master

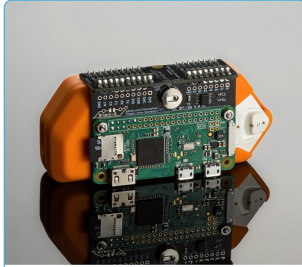


Wlinny | Circuit board square pendant DIY material package

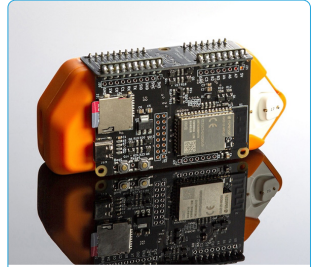
DIY Electronics



Flipper Zero
Protoboard Backpack



Flipper Zero
Raspberry Pi Backpack



Flipper Zero
Wifi Backpack – ESP32



Cap EEG kit



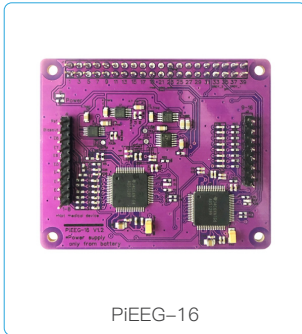
Cap EEG kit 16 channels



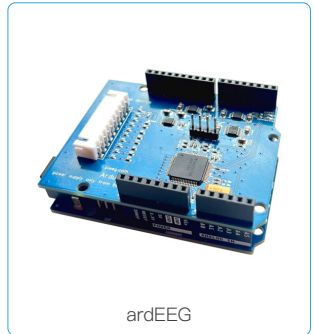
Kit to measure EMG/ECG/EKG



PiEEG



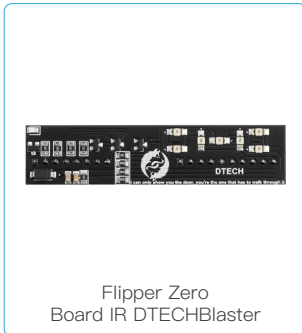
PiEEG-16



ardEEG



JNEEG

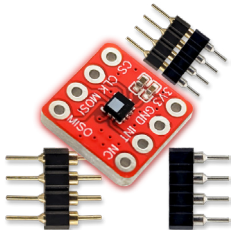


Flipper Zero
Board IR DTECHBlaster

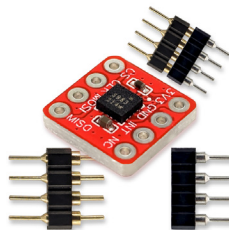


BPM Circuits – FEBERIS
(Flipper Zero Attachment)

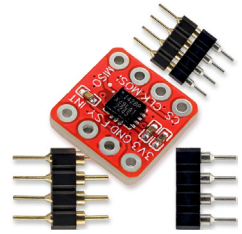
DIY Electronics



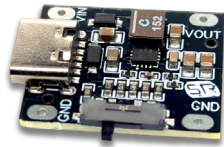
Sysrox LPS22HB Barometer
Pressure/Temperature Sensor
SPI Sensor



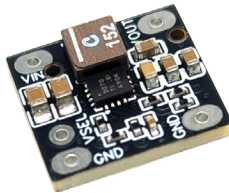
Sysrox Imu 6Dof Accelerometer
Gyroscope icm42688 SPI
Nano-Sensor



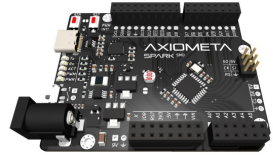
Sysrox Imu 6Dof Accelerometer
Gyroscope icm42688 SPI
Nano-Sensor



Sysrox DC-DC Buck-Boost
Converter 3-16V to 3.3V / 5V / 9V,
Max 2A Arduino Step-Up Step-Down
TPS63070 Voltage Regulator with
USB Type C Input



Sysrox DC-DC Buck-Boost
Converter 3-16V to 3.3V / 5V,
Max 2A Arduino Step-Up
Step-Down TPS63070
Nano Voltage Regulator



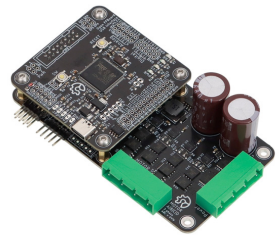
Axiometa Spark (SMD)



Axiometa Breadboard Supply
(Mini)



Motor module of vibration motor



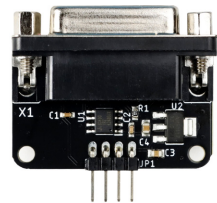
Open FFBoard TMC4671
driver kit (Motor driver only)



Aluminum Black Knob With Ring

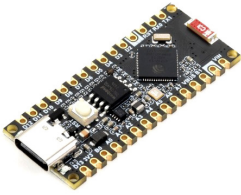


Aluminum silver knob with ring

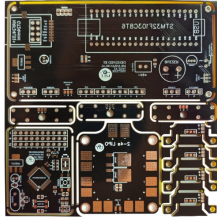


Open FFBoard BISS-C SPI
Adapter

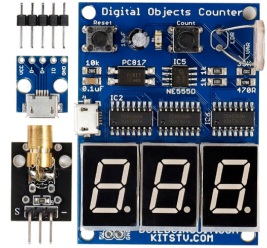
DIY Electronics



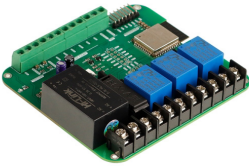
ESP32-S3-Nano Development Board, Based on ESP32-S3R8, Compatible



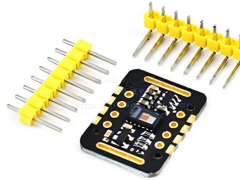
Build Your Own RC Transmitter & Receiver with STM32 & NRF24L01



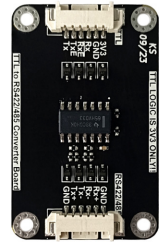
3 Digits Digital Objects Counter



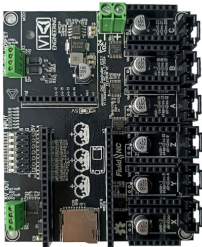
ESP32 Generic IOT Relay Board



Blood Oxygen External Pulse Detection Heartbeat Sensor Module



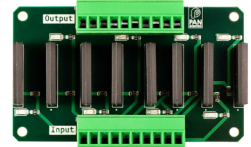
TTL to RS422/485 Converter Board



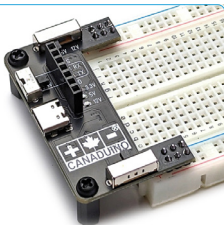
Jackpot CNC Controller



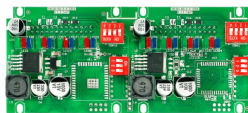
Bitaxe Ultra 204 ESP-32 Bitcoin Miner



8 Way Solid State Relay Board



CANADUINO® Breadboard Power Supply 3.3V, 5V, 12V with USB-UART

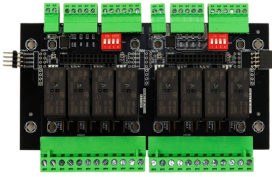


MOD-RLY-CTRL-IO

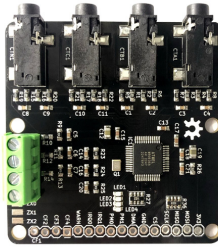


MOD-RLY-CTRL-C

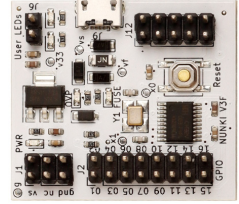
DIY Electronics



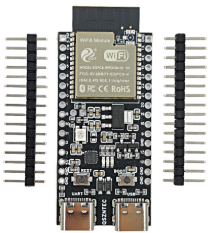
OCP-RLY-8CH16A



ATM90E36 devkit



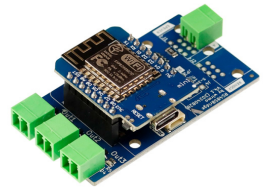
NUNKI Micro Designer



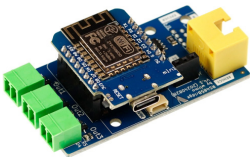
ESP32-C6-DevKitC-1-N4
ESP32-C6 Core Board WiFi6
BLE Zigbee



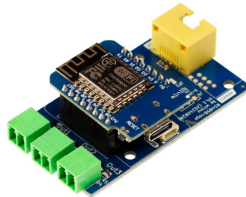
ESP32-C6-DevKitC-1-N4
ESP32-C6 Core Board WiFi6
BLE Zigbee



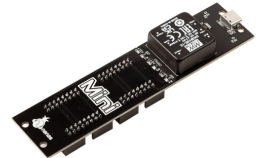
ESP32-C6 multi-sensor can
detect CO₂, VOC, IMU,
temperature, hum



RS485Bridge with Screw
Terminal



RS485Bridge with RJ45 for
Renogy



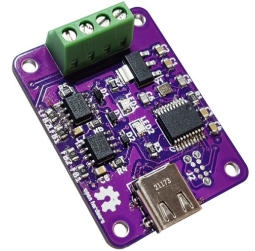
Mini: USB-C power supply for
Eurorack



USB-MIDI (TRS) Interface



Teapotlabs Feather RAK3172

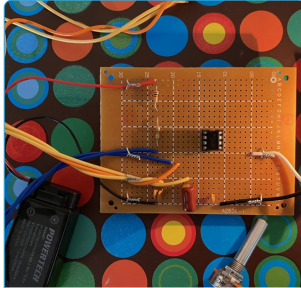


TC Logger: Your Versatile USB
Thermocouple Reader

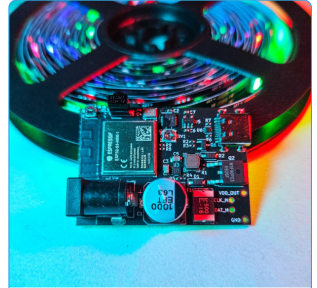
DIY Electronics



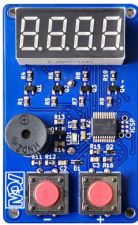
SoundSlide – Adjust Volume with a Simple Swipe



555 Timer Oscillator



LedBox V3



Bytes Counter:
Your Ultra-Portable
Counting Champion!



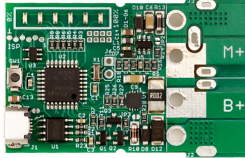
Aircraft Light Compatible
With Arduino



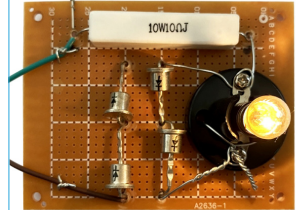
ATtiny Keychain – Digital Dice



EspoTek Labrador: Easy-to-Use,
All-in-One USB Oscilloscopes



Yamaha Mid-drive Motor Dongle
to Use 3rd Party Batteries



Light Bulb Indicator



FluidNC RJ12 Pendant/Display
Module



Isolated USB to TTL UART
RS232

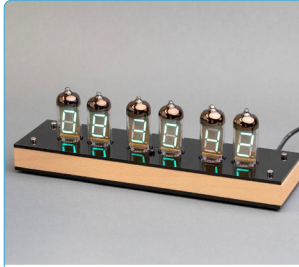


Fly Daughterboard and Molex
Cable

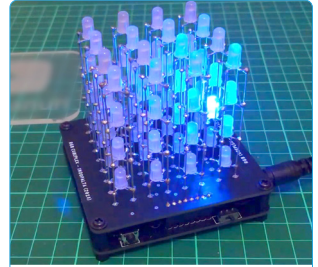
Kits



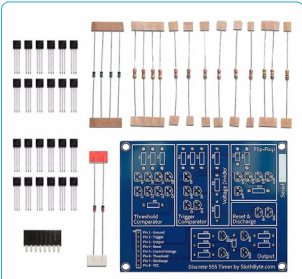
DEEJ Physical Volume Mixer
Electronics Kit



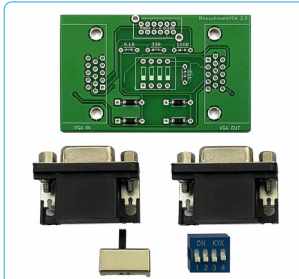
IV-11 VFD Tube Clock
(Educational Soldering DIY KIT)



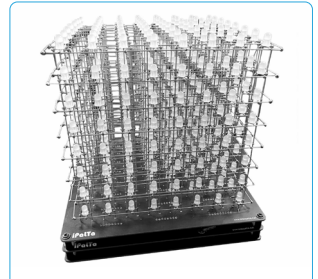
LED Cube RGB 4x4x4 Kit /
Charliecube PALTA Style



Discrete 555 Timer Kit



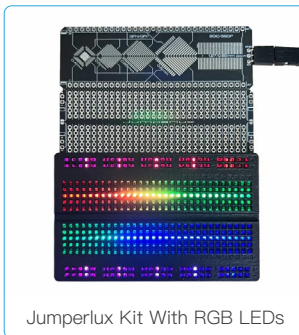
Monochrome VGA Kit



LED Cube RGB 8x8x8 Kit
Arduino Compatible



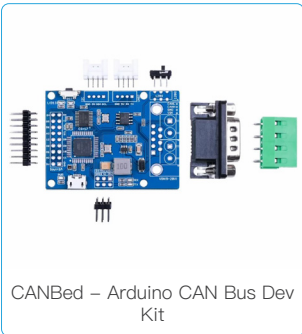
Jumperlux Kit Without LEDs



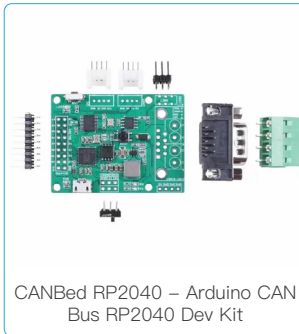
Jumperlux Kit With RGB LEDs



Jumperless Rev 3 Kit



CANBed - Arduino CAN Bus Dev
Kit

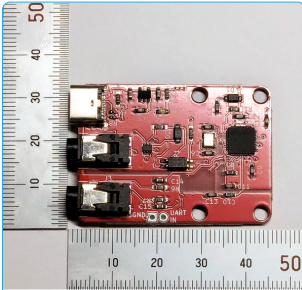


CANBed RP2040 - Arduino CAN
Bus RP2040 Dev Kit

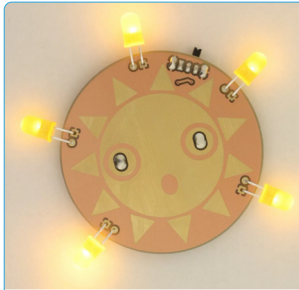


CANBed FD - Arduino CAN FD
Dev Kit

Kits



MIDI Guy Rev 2.1 Kit



Sunny Surprise Soldering Kit



Chilly Snow Cloud Soldering Kit



Radiant Rainbow Soldering Kit



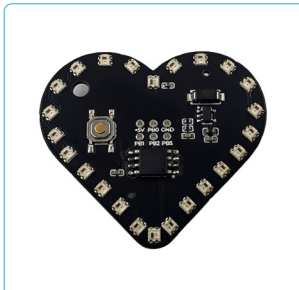
Angry Storm Cloud Soldering Kit



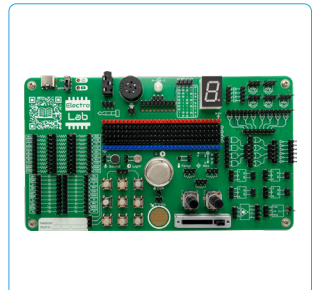
Happy Rain Cloud Soldering Kit



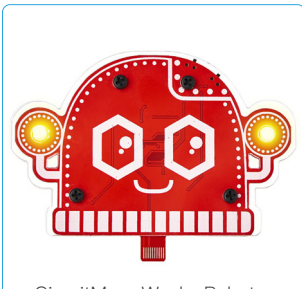
Tincade Kit – 8bit arcade game machine



HeartBit



ElectroLab



CircuitMess Wacky Robot – Capacitron

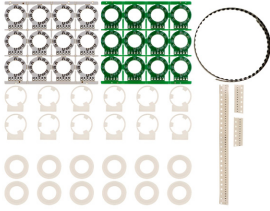


CircuitMess Wacky Robot – Mr Bee

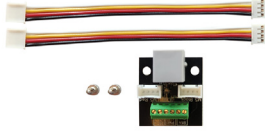


CircuitMess Jay-D: DIY DJ Mixer Kit

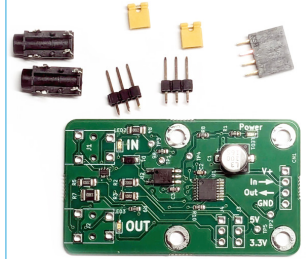
Kits



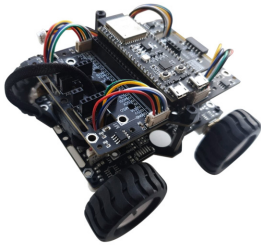
3PDT RGB RING LED – DIY KIT WITH 12 UNITS



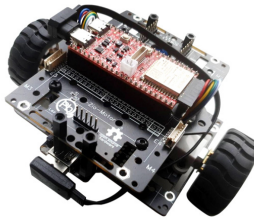
FluidDial RJ12 Wiring Kit



MIDI-UART Interface-san Kit



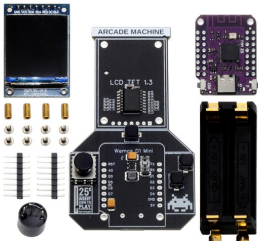
Rosmo 4WD Kit



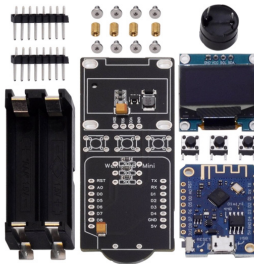
Rosmo 2WD Kit



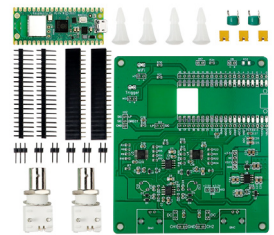
Smart Line Following Robot Kit



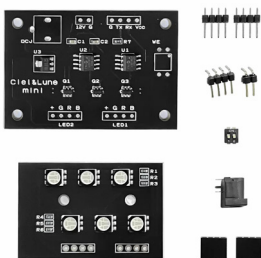
Play ESP DIY Kit



ESP8266 Tamagotchi DIY Kit



FSCOPE-500K OSCILLOSCOPE KIT



Ciel&Lune Lighting composer kit

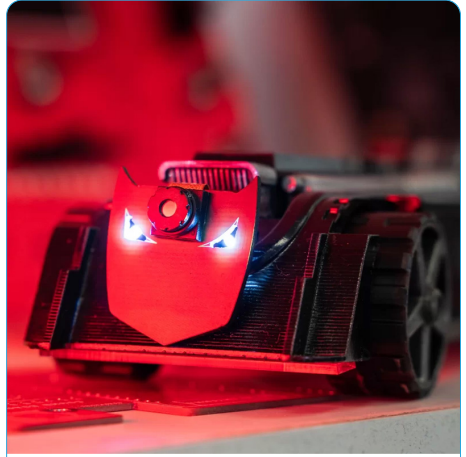


Touch Stepless Dimming Snowflake Lamp

IoT & Smart Home



CircuitMess Chatter
A DIY Wireless Communicator



CircuitMess Batmobile™



CircuitMess BIT
DIY Game Console



CircuitMess Sparkly
DIY Robot Car



CircuitMess Tools Pack
Set of electronic tools



CircuitMess Nibble
DIY Game Console



NerdMiner V2

IoT & Smart Home



Bicycle/Motorcycle/Car Special Position Tracker



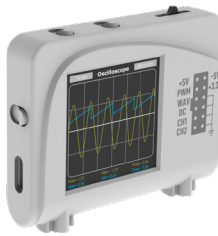
Lab-On-The-Go



VEGO – Auto-ranging Digital Multimeter



Spoty precision SMD micro-solder paste dispenser



Zoolark, Function Generator and Oscilloscope



MEGO: Rechargeable 4–24V Portable Breadboard Power Supply



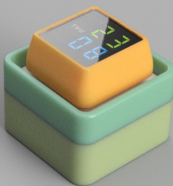
SmartClips, bluetooth nodes with LED lights and sensors for use



ZigStar UZG-01 – Universal Zigbee Gateway



ZigStar UZG-01 – Universal Zigbee Gateway (White Color)



MagiClick – OpenSource Multifunctional Macropad



DESKCHARGER300



Oric IJK-Joystick & Joypad – RED

IoT & Smart Home



ZBStick-P – ZigStar Stick Pro



tinySniffer – USB sniffer



Inkycal – Create your own e-paper dashboard!



USB-C Splitter
AndroidAuto/CarPlay



enclosure for eBUS Adapter
Shield v5



ESP32-C6-EVB Board
Support Tasmota 4 Relay 4
Input with WiFi BI



metal case for ColorBerry
and beepy



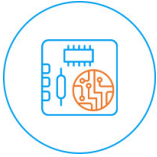
ColorBerry
(with Battery)



Blackberry BB9900 BLE&USB
Keyboard

Our Service

Dedicated to “Bringing Your Innovative Ideas to Life”, Elecrow provides professional technical support and advanced manufacturing services (PCB manufacturing, 3D printing, wood & acrylic laser cutting, component sourcing, molding, CNC milling, sub-assembly, and kitting services, etc.) to create a maker-oriented PCB & Open Hardware & Marketplace.



PCB Manufacturing



Component Sourcing Services



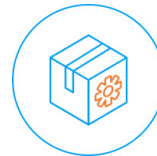
PCB Assembly Services



Sub-assembly & Kitting Services



Partner Selling



Drop Shipping



Warehousing Services



Flashing & Testing Services



E-mail: info@elecrow.com

Tel/Fax: (86-755) 23204330

Website: www.crowpi.cc

Website: www.elecrow.com

Facebook: [@elecrow.openhardware](https://www.facebook.com/elecrow.openhardware)

Twitter: [@Elecrow1](https://twitter.com/Elecrow1)

YouTube: [@Elecrow](https://www.youtube.com/@Elecrow)

Address: 5th Floor, Fengze Building B, Nanchang Huafeng Industrial Park,
Hangcheng Street Hangkong Road, Baoan District, Shenzhen City, China, 518126



www.elecrow.com